

**12**  
YEAR GUARANTEE

austenitic  
**304**

OPENING SOLUTIONS



Worldwide, Securistyle is recognised for setting the standards in hardware. Those standards reflect our commitment to quality in design, manufacture and performance. Our in-depth understanding of the markets in which we operate means that we anticipate the growing requirements in each sector, continue to develop a range of versatile products which comply with the latest legislation and provide real value.

### Our Mission...

"It is only by consistently developing our products and services that we will remain global leaders. Together with the whole Securistyle team, we pledge to listen to our customers, to anticipate their future needs and deliver, consistently, with a professionalism that sets us above and beyond our clients' expectations"

**Kevin Hill**  
Managing Director

LONDON

NEW YORK

BEIJING

PARIS

GENEVA

MILAN

SYDNEY

HONG KONG



BS EN ISO 9001  
Cert No FM 611016

**12**  
\*  
YEAR GUARANTEE



\*Terms and conditions apply. Please ask for further information



## TEST FACILITY

### TYPE

AUTOMATED CONTINUOUS  
PRODUCT TESTING

### BENEFIT

*Confidence in products tested  
and fit for purpose*

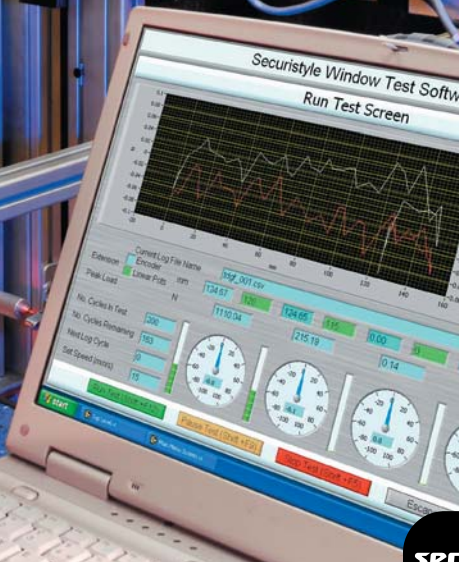
10,000 CYCLES

15,000 CYCLES

20,000 CYCLES

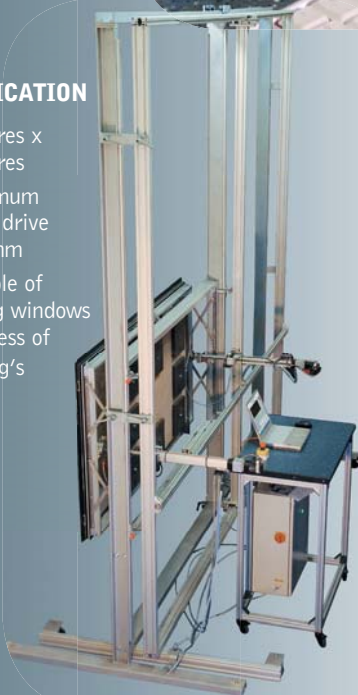
25,000 CYCLES

30,000 CYCLES



## RIG SPECIFICATION

- 3 metres x 3 metres
- Maximum linear drive 300 mm
- Capable of testing windows in excess of 500 kg's



## TEST FACILITY

"Continued research and development into existing and new products is of paramount importance to Securistyle, enabling us to maintain our position as global leaders in the hardware market.

The company's recent investment in world class facilities for the testing of project out vents illustrates our dedication to providing a unique technical support service of the highest calibre for our clientele.

The new outstanding facilities combined with the unrivalled knowledge of the CAD engineers and technical development team help to sustain an exceptional support network available to all clients.

The technologically advanced system is capable of testing any configuration of vents up to and including 3 metres square. Vents may be endurance tested up to the full life expectancy of the product, and beyond, to any opening distance within the product specification.

Sophisticated data collection software has been employed for the recording of opening and closing forces of the vent throughout the life cycle of the product. The acquired data can be converted to graph format for inclusion in product specification details or test reports for presentation to architects, façade and systems companies etc."



TESTED TO DESTRUCTION  
*Performance*



## PARALLEL HINGE

### TYPE

### HEAVY DUTY PARALLEL HINGE SYSTEM

### BENEFIT

*Aesthetically pleasing sightlines, maintaining the reflective qualities, with built-in safety features*

Windows equipped with Parallel Plus provide the ultimate in natural ventilation by providing a balanced air flow around the entire opening.

- Provides adequate, draught free ventilation when opened to only 40mm
- Small opening gap ensures greater security for occupants
- Can be operated manually up to 200kg\*
- Sash adjustment feature to correct parallelism on tall or heavy vents
- Tested in excess of 20,000 fully open cycles
- Made from high grade (304) Austenitic stainless steel for maximum performance in the most corrosive environments
- Can be connected to a building management system
- Full technical and sales support available
- 12 year guarantee, terms and conditions apply

Austenitic (was 304) stainless steel to BS EN ISO 10088-2 Grade 1.4301 for enhanced corrosion resistance.

\*Depending on window configuration.







## RUSHMORE HINGE

### TYPE

## EXTRA HEAVY DUTY HINGE SYSTEM

### BENEFIT

*Significantly enlarged glazed area up to 4.2 metres high*



austenitic  
**304**

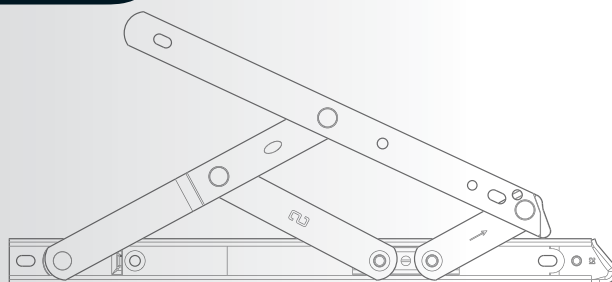
The Rushmore is constructed in robust 304 grade austenitic steel - quality built to last.



- The Rushmore hinge is specifically designed for large openings in curtain walling
- Significantly enlarged glazed openable area made possible by the Rushmore means fewer broken sightlines
- Each window must be either mechanically or motor driven to control opening and closing
- Helps provide natural ventilation or smoke release in commercial buildings
- Easily copes with top or bottom hung vents of 350kg and 4.2 metres high
- Bottom hung windows without motor requires 1 pair of separate restrictors
- Tested to 10,000 cycles
- 12 year guarantee, terms and conditions apply

**RUSHMORE**  
HINGES

OPENING SOLUTIONS  
*Product Range*



# STERLING HINGES

## STERLING HINGE

### TYPE

HEAVY DUTY FRICTION HINGE

### BENEFIT

*Proven up to 30,000 full cycles and conforms to all international standards*



- Self-balancing hinge
- Capable of achieving all leading international standards, including the UK BS 6375; the North American AAMA 904.1; and the Singapore Standard 212
- Unrivalled weather sealing
- Made from high grade (304) Austenitic stainless steel for maximum performance in the most corrosive environments
- 12 year guarantee, terms and conditions apply

### Note:

As with all types of friction hinges, friction can not be provided until the slider moves, therefore when limiting the opening of top hung vents to angles of 10° or less, additional device(s) will be required to enable them to remain in a selected ventilation position.

Austenitic (was 304) stainless steel to BS EN ISO 10088-2 Grade 1.4301 for enhanced corrosion resistance.

OPENING SOLUTIONS  
*Product Range*



austenitic  
**304**  
**12**  
YEAR GUARANTEE

**HEAVY DUTY FRICTION SLIDERS**  
Stainless steel composite sliders to give maximum strength yet perform with the smoothest of action



**STEEL END LOCATOR**  
A stainless steel end cap automatically directs the end point smoothly and firmly towards the closed position



**OPTIONAL ADJUSTMENT**  
One man, on site, vent alignment adjustment. closed position



## STORM BALANCED

### TYPE

## HEAVY DUTY FRICTION HINGE

### BENEFIT

A self-balancing hinge range capable of achieving high gust loading

- Self-balancing hinge range
- Capable of achieving high gust loading
- Unrivalled weather sealing
- Low inventory non balancing range option
- Austenitic 304\* stainless steel throughout for enhanced corrosion resistance
- Superior Carrying Capacity
- 12 year guarantee (details available upon request)

The Storm hinge range has been designed to exceed the requirements of AAMA 101/I.S.2 - 08, specifically high gust load rating. In addition to exceeding this high performance standard, Storm also benefits from excellent weather sealing from its asymmetric metal point and cap as well as smooth reliable operation.

Full technical and sales support which will cover consultancy on a per project basis and on-site advice when necessary.

\*Austenitic (was 304) stainless steel to BS EN 10088-2 Grade 1.4301 for enhanced corrosion resistance.

**STORM** BALANCED



# CASE STUDY 1

PROJECT	MORELONDON	
LOCATION	LONDON, UK	
ARCHITECT	FOSTER & PARTNERS	
SYSTEM COMPANY	PERMASTEELISA	
PRODUCTS USED	RUSHMORE	

## BRIEF OVERVIEW

13 acres on the south bank of the Thames, with views facing the Tower of London. More London presented a fantastic opportunity to create a new style of working community within Central London.

The vision; to create an environment where people would love to work - an environment others would wish to visit and use. Great light and a sense of space add to the energy and improved way of life.






PROJECT NAME	LOYOLA UNIVERSITY	
LOCATION	CHICAGO, ILLINOIS, USA	
ARCHITECT	SOLOMON CORDWELL BUENZ	
SYSTEM COMPANY	UNKNOWN	
PRODUCTS USED	PARALLEL PLUS	



## BRIEF OVERVIEW

Solomon Caldwell Architects were briefed to combine the already existing facilities of the on-site libraries and IT services of Loyola University to provide the undergraduates a useable and practical study space called the Information Commons.

Completed in 2008 Loyola University now houses a 69,000 square foot digital research centre on the shore of Lake Michigan. The Information Commons uses a number of natural and mechanical systems to provide a well ventilated and sustainable environment for the students of Loyola University; this includes Securistyle's Parallel Plus hinge system. Like all heavy duty hinges from Securistyle, this system is manufactured from austenitic grade stainless steel for enhanced corrosion resistance, and is backed by a 12 year guarantee. This was a significant benefit with the building so close to Lake Michigan.

PROJECT NAME	EDIFICIO ESQUILACHE	
LOCATION	LIMA, PERU	
ARCHITECT	REYNALDO LEDGARD	
SYSTEM COMPANY	CORPORACION MIYASOTA	
PRODUCTS USED	STERLING	

## BRIEF OVERVIEW

When architects Reynaldo Ledgard were tasked with building a new skyscraper office block in the San Isidro district of Lima, Peru, they turned to well established manufacturer of quality, innovative hardware for the window and door industries, Securistyle for its Sterling hinge.

Constructed in 2008, the Edificio Esquilache is a concrete, aluminium and glass reinforced building which spans 16 floors and five additional basement floors. With a modern architectural style, it is home to offices and a parking garage. Each of the windows on the high rise development can be opened individually, and by using the top hung Sterling hinges with their proven strength, the architects were able to ensure the levels of durability demanded by such a project.





PROJECT NAME	MOOD DISORDER RESEARCH CENTRE, EXETER UNIVERSITY	
LOCATION	EXETER, UK	
ARCHITECT	WILKINSON EYRE ARCHITECTS	
SYSTEM COMPANY	SMART SYSTEMS	
PRODUCTS USED	PARALLEL PLUS	



## BRIEF OVERVIEW

Securistyle's Parallel Plus Hinge System was used in a £450m capital investment programme at the Mood Disorder Research Centre at Exeter University for its excellent ventilation and aesthetic benefits. The hinge system was incorporated into aluminium windows manufactured by MPS using Smarts aluminium profile. One of the key design elements of this entire project was ensuring that the finished building was in keeping with its surroundings as much as possible. For example working with natural features of the site, a 'green' corridor connects the Forum with the wider landscape and an undulating Limber gridshell roof ensures it fits in respectfully with the surrounding area and key views across the city to Dartmoor. The Parallel Plus hinge allows the windows to be opened enabling ventilation of the space, without affecting the external aesthetics of the building and is the perfect green solution because it offers excellent natural ventilation by providing a balanced airflow around the entire window opening.

The new space is home to an extended library, new learning spaces, student services, a landscaped plaza and a new university reception. The Mood Disorders Centre is a partnership between the NHS and University of Exeter. Its mission is to conduct psychological research and also conduct assessment, treatment and training for the benefit of people who suffer from depression.

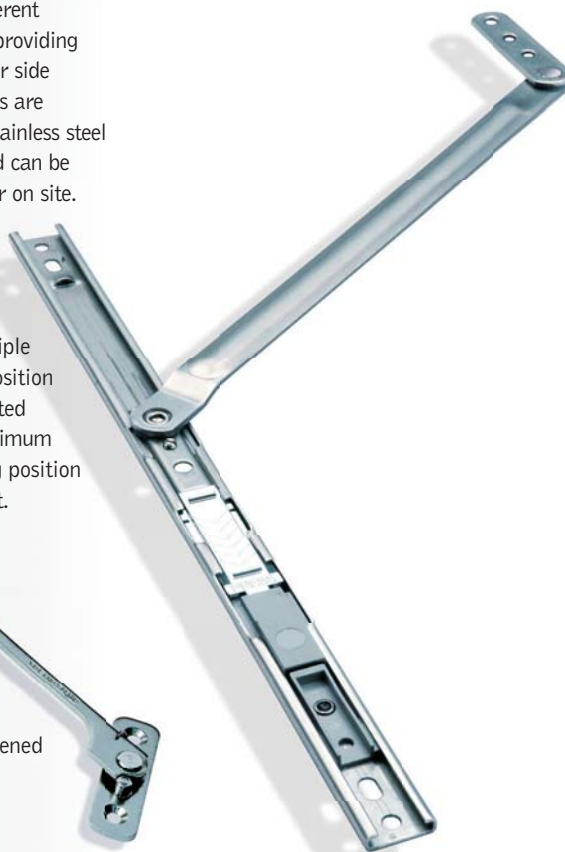


## RESTRICTORS

Securistyle can offer a variety of different restrictors to suit your requirements providing you with restricted openings for top or side hung vents. All commercial restrictors are manufactured from Austenitic 304 stainless steel for enhanced corrosion resistance and can be fitted either during vent fabrication or on site.

### STAY OPEN RESTRICTOR

Restricts maximum opening of vents plus prevents closure of vent in multiple positions. Locks in fully restricted position and remains in position when subjected to wind gusts up to 1.5k N/m<sup>2</sup>. Maximum restriction is controlled by the fitting position of the product on the frame and vent.



### CAVITY FIT RESTRICTOR

Suitable for occupier manual release and self-relocates to restricted opening when vent is closed. Tested to BS6375 Part 2 to withstand a force of 600N when opened at the restricted position.



### FIXED RESTRICTOR

These are permanent restrictors that will restrict vents whilst also providing additional friction control for vent movement.

### DETACHABLE RESTRICTORS

Key release restrictor stay for use with Sterling and Storm Balanced commercial hinges and tested to BS 6375 part 2 to withstand a force of 600n when opened at the restricted position.



### ADJUSTMENT BLOCKS

Used on top hung vents over 100Kg and optional on lighter vents. Cam adjustment device for +/- 2mm vertical adjustment by simple allen key operation. Suitable for use with all Securistyle commercial hinges this product provides easy alignment of heavy vents on site.



### PULL-IN BLOCKS

Pull-In Blocks will maintain an effective weather seal throughout the operating life of the vent. Optimisation of the compression can be achieved by means of the adjustable frame component. Pull-In Blocks will also reduce profile bow on large vents when subjected to negative wind loads.







## securistyle

With a commitment to product innovation and development, investment in people and specification requirements, Securistyle now exports its products across the world with projects in Asia, North and South America and Europe.

Securistyle remains successful in this sector by providing high quality window solutions that fulfil the requirements and demands of large-scale commercial developments and that meet European Standards (CEN) and leading international standards.



BSEN ISO9001  
Cert No FM 611016

**12**  
YEAR GUARANTEE



**ADDITIONAL TECHNICAL  
DATA FOR THESE PRODUCTS  
CAN BE OBTAINED FROM  
SECURISTYLE**  
**PLEASE CALL:**  
**01242 221200**  
or E-mail:  
info@securistyle.co.uk



### Securistyle

Kingsmead Industrial Estate, Princess Elizabeth Way  
Cheltenham, Gloucestershire GL51 7RE, UK

**Tel: +44 (0) 1242 221200**

**Fax: +44 (0) 1242 228194 / 520828**

E-mail: info@securistyle.co.uk

Website: www.securistyle.co.uk

Due to our policy of continual improvement we reserve the right to alter specifications without notice. It is the responsibility of the window manufacturer to ensure that the finished window meets the required performance and safety specification.

All transactions are subject to our standard conditions of supply, which are available on request.

\* Conditions apply.

SECURISTYLE WORLDWIDE  
Global Service