

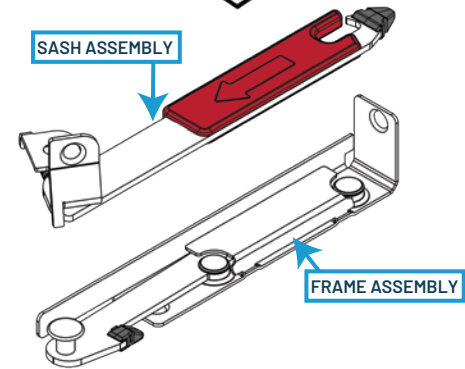


Installation Instructions

Radisson Industries' *The Guardian* Window Opening Control Device consists of two main assemblies: one for the window frame and the other for the window sash. Each interlocks during the regular closing motion of the window.

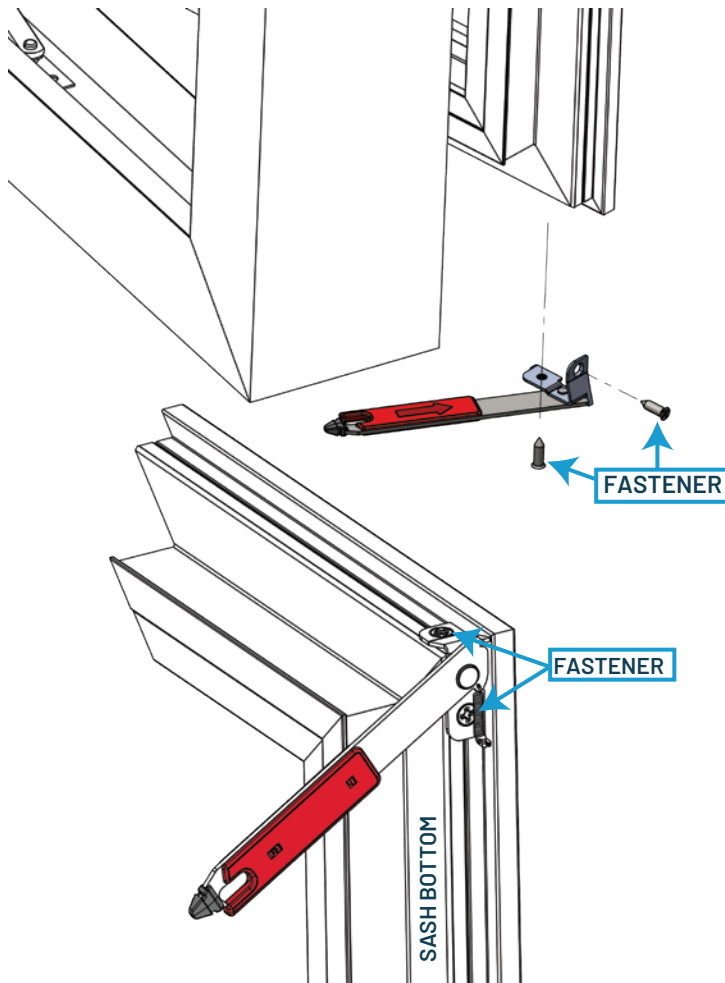
***No special tools, jigs, or routing are required for installation.**

! It is the window manufacturer/installer's responsibility to ensure adequate installation for proper and safe functioning of *The Guardian* WOCD. Any modification will void its safety rating.



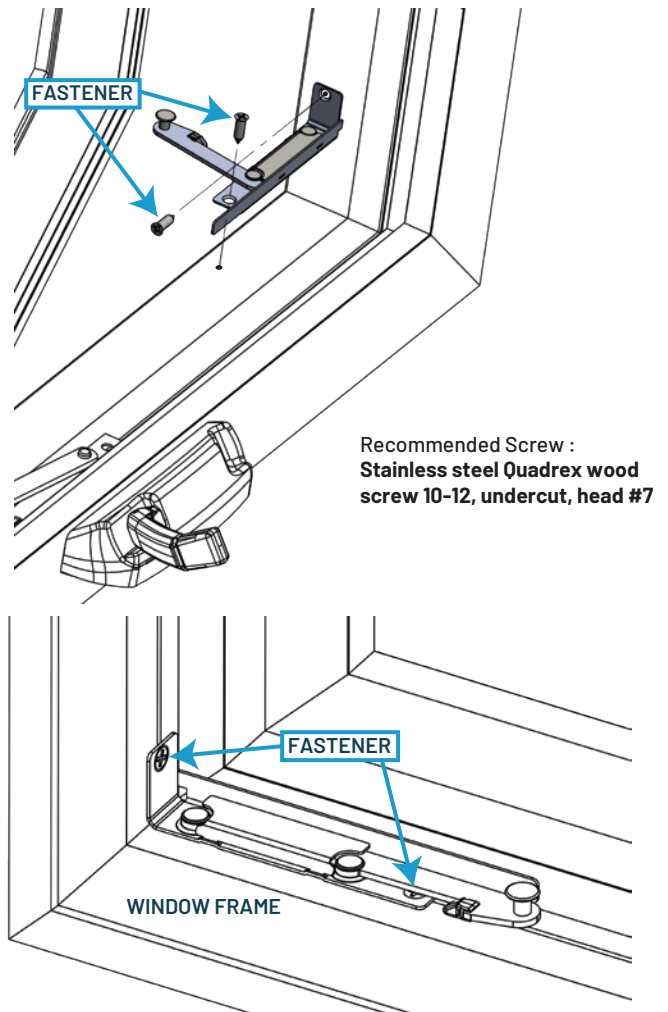
SASH ASSEMBLY INSTALLATION

The **sash** assembly of *The Guardian* WOCD is to be placed on the bottom opening and sealing corner of the window sash structure, which will be self-located so long as the bracket is square, flush, and referenced to an edge. Fastener will be used on each of the mounting holes to drill and secure it to the body of the sash.



FRAME ASSEMBLY INSTALLATION

The **frame** assembly of *The Guardian* WOCD is to be placed on the bottom corner of the window frame structure opposing the casement opening, which will be self-located so long as the bracket is square, flush, and referenced to the inside bottom corner of the window frame. Fasteners will be used on each mounting hole to secure it to the body of the frame.



! **IMPORTANT**
All designs, figures, recommendations, or revealed business strategy is confidential and sole property of Radisson Industries and not to be shared to 3rd parties without Radisson's written consent under risk of legal action.