



WHS
FENESTRATION

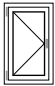
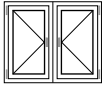
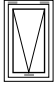
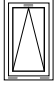
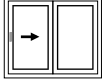
INDEX

Terms Key

General Catalog

Door Hardware –	Pages 2–17
Door Hardware 16 mm Euro–Groove –	Pages 18–28
Projected Window Hardware –	Pages 29–38
Frame Assembly Joints –	Pages 39–44
Weather Seals & Glazing –	Pages 45–48

Icon Index

	Side Hung Single Sash	AL Aluminum	ANO Anodized
	Side Hung Double Sash	ZN Zinc	RAL Powder Coated
	Bottom Hung Single Sash	Ss Stainless Steel	MILL Mill Finish
	Top Hung Single Sash	PA Plastic/Nylon	PVD Plating
	Sliding Single Sash	Em EPDM	

Profile Requirements

Aluminum

- Euro–Groove 15x20mm (Type 1)
- Euro–Groove 14x18mm (Type 1)
- 16–18mm / .62”–.70” Hardware Cavity

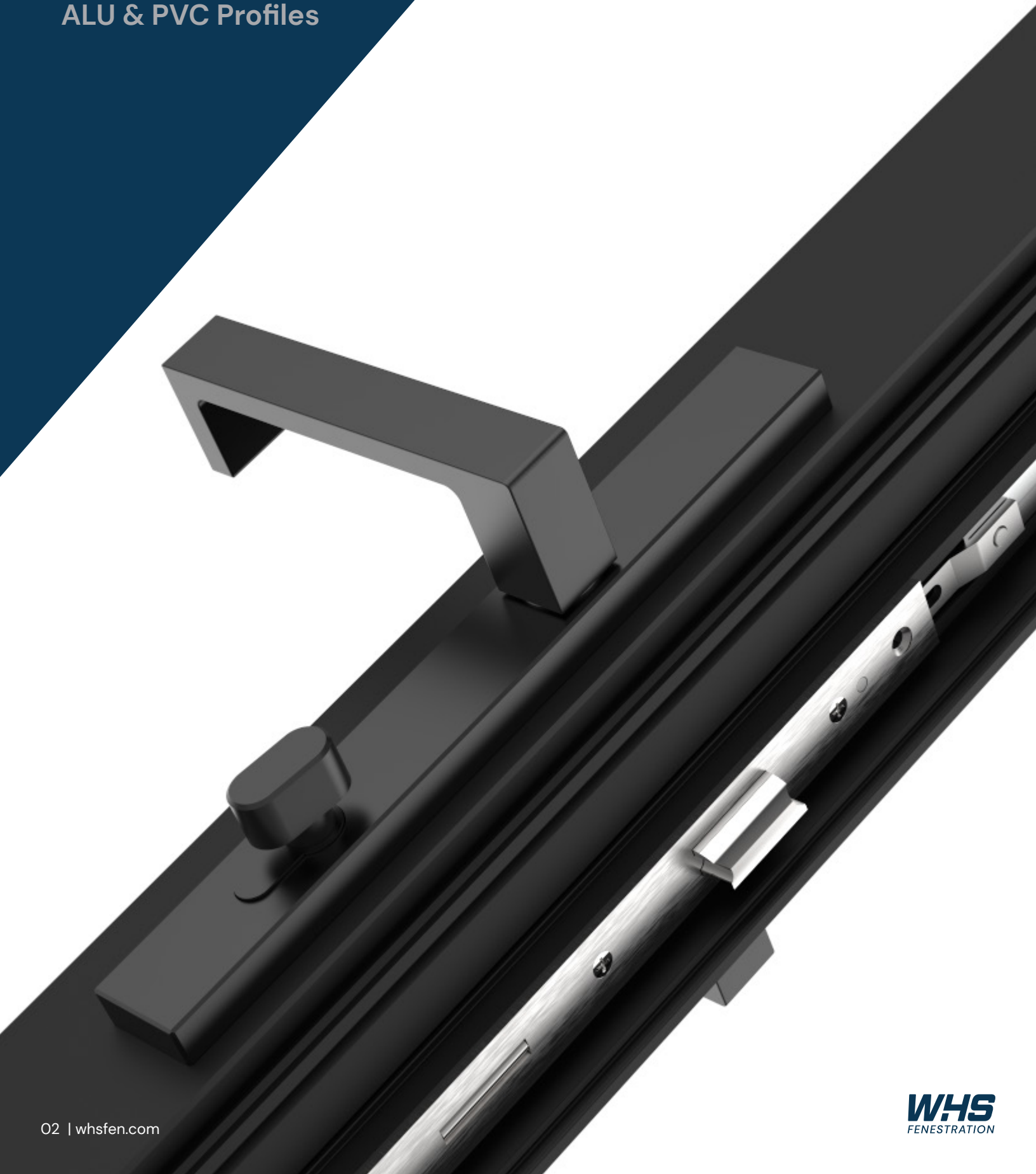
Profile Requirements

PVC

- Euro–Groove 16mm (Type 1)

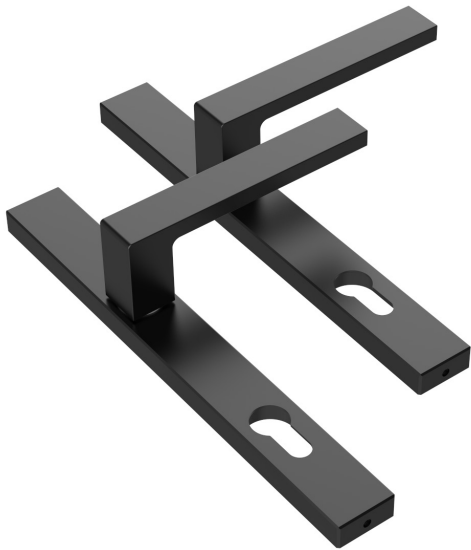
SWING DOOR HARDWARE

ALU & PVC Profiles





GT91(S)



ANO	RAL
MILL	
AL	ZN
Ss	PA

The GT91(S) handle offers a contemporary design with concealed fixing points, integrated spring cassette, and through bolt lever assembly

Features and Specifications

- Milled aluminum escutcheon and lever
- Fully concealed fixing points
- Independent spring cassette which eliminates the “drooping handle” effect
- Supplied pre-assembled and ready to install
- 92 mm PZ standard center line
- Available in powder coated and anodized finishes

Active/Inactive

Active Configuration – Compatible with standard thumb turn euro cylinder.
Inactive Configuration – Compatible with standard thumb turn euro HALF cylinder.

Technical Manual

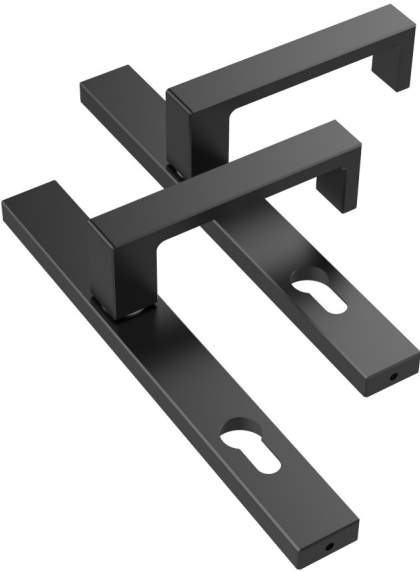
Additional technical details and product configurations can be found in the GT HANDLE technical manual. Available upon request.

Ordering Details

PRODUCT CODE	COLOR/ FINISH	ACTIVE/ INACTIVE	BOX QUANTITY
9DS1283	BLACK	ACTIVE	12
9DS1284	SILVER	ACTIVE	12
9DS1458	WHITE	ACTIVE	12
9DS1762	MILL	ACTIVE	12
9DS1526	BLACK	INACTIVE	12
9DS1527	SILVER	INACTIVE	12
9DS1459	WHITE	INACTIVE	12
9DS1835	MILL	INACTIVE	12



GT91(S) ACCESSIBILITY



ANO	RAL
MILL	
AL	ZN
Ss	PA

The GT91(S) accessibility handle offers an ADA lever solution with concealed fixing points, integrated spring cassette, and through bolt lever assembly.

Features and Specifications

- Milled aluminum escutcheon and lever
- Fully concealed fixing points
- Independent spring cassette which eliminates the “drooping handle” effect
- Supplied pre-assembled and ready to install
- 92 mm PZ standard center line
- Available in powder coated and anodized finishes

Active/Inactive

Active Configuration – Compatible with standard thumb turn euro cylinder.
Inactive Configuration – Compatible with standard thumb turn euro HALF cylinder.

Technical Manual

Additional technical details and product configurations can be found in the GT HANDLE technical manual. Available upon request.

Ordering Details

PRODUCT CODE	COLOR/ FINISH	ACTIVE/ INACTIVE	BOX QUANTITY
9DS1845	BLACK	ACTIVE	12
9DS1667	SILVER	ACTIVE	12
9DS1459	WHITE	ACTIVE	12
9DS1879	MILL	ACTIVE	12
9DS1846	BLACK	INACTIVE	12
9DS1668	SILVER	INACTIVE	12
9DS1461	WHITE	INACTIVE	12
9DS1880	MILL	INACTIVE	12



GT91(R)



ANO	RAL
MILL	
AL	ZN
Ss	PA

The GT91(R) handle offers a traditional rounded design with concealed fixing points, integrated spring cassette, and through bolt lever assembly.

Features and Specifications

- Milled aluminum escutcheon and lever
- Fully concealed fixing points
- Independent spring cassette which eliminates the “drooping handle” effect
- Supplied pre-assembled and ready to install
- 92 mm PZ standard center line
- Available in powder coated and anodized finishes

Active/Inactive

Active Configuration – Compatible with standard thumb turn euro cylinder.
Inactive Configuration – Compatible with standard thumb turn euro HALF cylinder.

Technical Manual

Additional technical details and product configurations can be found in the GT HANDLE technical manual. Available upon request.

Ordering Details

PRODUCT CODE	COLOR/ FINISH	ACTIVE/ INACTIVE	BOX QUANTITY
9DS1104	BLACK	ACTIVE	12
9DS1067	SILVER	ACTIVE	12
9DS1526R	BLACK	INACTIVE	12
9DS1527R	SILVER	INACTIVE	12



GT FOLDING HANDLE



ANO	RAL
MILL	
AL	ZN
Ss	PA

The GT Folding Handle offers a contemporary design with concealed fixing points, integrated spring cassette, and multiple spindle options.

Features and Specifications

- Contemporary design styled to match GT91 lever sets
- Fully concealed fixing points and lever assembly
- Integrated tension springs
- Supplied pre-assembled and ready to install
- 43 mm standard center line
- Available in powder coated and anodized finishes

Spindle Size

8 MM spindle variant is compatible with Lockmaster 92 and ST Lock gear boxes.
6 MM spindle variant is compatible with standard window lock gear transmissions.

Technical Manual

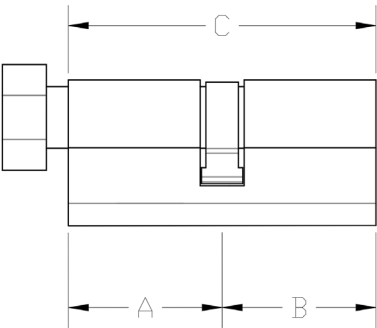
Additional technical details and product configurations can be found in the GT HANDLE technical manual. Available upon request.

Ordering Details

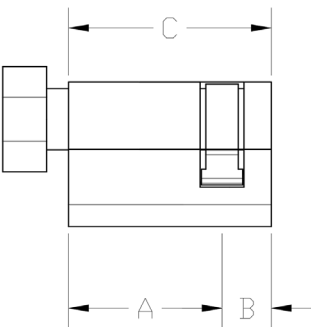
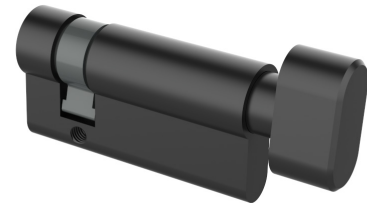
PRODUCT CODE	COLOR/ FINISH	BOX QUANTITY	SPINDLE SIZE (MM)
5DS823	BLACK	10	8
5DS824	SILVER	10	8
5DS825	WHITE	10	8
5DS626	BLACK	10	6
5DS627	SILVER	10	6
5DS628	WHITE	10	6



SX EURO CYLINDER



SX EURO HALF CYLINDER



Features and Specifications

- Available in Euro double and Euro thumb turn
- Available keyed alike and keyed different

Ordering Details

PRODUCT CODE	INSIDE DIM (A)	OUTSIDE DIM (B)	OVERALL DIM (C)	BOX QUANTITY
SX(35T+35)	35	35	70	10
SX(40T+40)	40	40	80	10
SX(50T+30)	50	30	80	10
SX(50+30T)	50	30	80	10
SX(31.5x50.5T)	31.5	50.5	82	10
SX(31.5Tx50.5)	31.5	50.5	82	10
SX(33.5Tx52.5)	33.5	52.5	86	10
SX(33.5x52.5T)	33.5	52.5	86	10
SX(45Tx45)	45	45	90	10
SX(50Tx50)	50	50	100	10
SX(30Tx10)	30	10	40	10
SX(31.5Tx10)	31.5	10	41.5	10
SX(33.5Tx10)	33.5	10	43.5	10
SX(35Tx10)	35	10	45	10
SX(45Tx10)	45	10	55	10

Finish Options

Specify finish by adding (XX) to product code. Satin silver (SS), satin black (SB), satin white (SW), satin brushed nickel (SBN).

Thumb Turn Options

Specify finish by adding (X) to product code. Low Profile (X07), Contemporary (X11), Accessibility (X15), Traditional (X02).

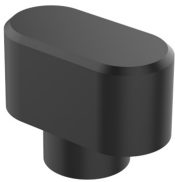
Customization & Sizes

Contact WHS Fenestration for a full list of sizes and options for customization.

Swing Door Hardware
Locking Cylinders
Alu & PVC Profiles



X07



PVD RAL

ANO

Br

X15



PVD RAL

ANO

Br

X11



PVD RAL

ANO

Br

X02



PVD RAL

ANO

Br

Finish Options

Specify finish by adding (XX) to product code. Satin silver (SS), satin black (SB), satin white (SW), satin brushed nickel (SBN).

Standard Thumb Turn

Unless specified otherwise, all SX Euro cylinders are fitted with low profile thumb turn (X07).

Drawing and Dimensions

Available upon request.



CYLINDER ESCUTCHEON



Contemporary design cylinder escutcheon with concealed fixing points.

Features and Specifications

- Fully concealed fixing points
- Supplied pre-assembled and ready to install
- Available in powder coated and anodized finishes

Drawing and Dimensions

Available upon request.

Ordering Details

PRODUCT CODE	COLOR/ FINISH	BOX QUANTITY
CESB	BLACK	50
CESS	SILVER	50
CESW	WHITE	50
CESM	MILL	50



ST LOCK



N/A	
AL	ZN
Ss	PA

The ST Series multi-point lock is a high security door lock applicable to profiles with type 1 Euro-grooves.

Features and Specifications

- High security multi-point lock gearbox
- 12.5 mm (.5") stainless steel deadbolt center
- Easily reversible latch bolt to minimize stock requirements
- Soft closing latch bolt to protect strikes
- 28 mm and 34mm backset options
- Sprung gearbox with PZ92mm center with elongated slot to accommodate standard trim sets
- Standard 22 mm faceplate
- Compatible with Euro profile cylinder
- Brushed 304 Stainless Steel faceplate offering high corrosion resistance
- Compatible with standard SDK series locking accessories (locking points, keepers, corner transmission)
- Compatible with modular Specter locking accessories (locking points, keepers, corner transmission)

Ordering Details

PRODUCT CODE	BACKSET (MM)	ACTIVE/ INACTIVE	BOX QUANTITY
ST-B01-9228	28	ACTIVE	10
ST-B01-9234	34	ACTIVE	10

Profile Requirement

Euro-Groove 15x20mm (Type 1)

Technical Manual

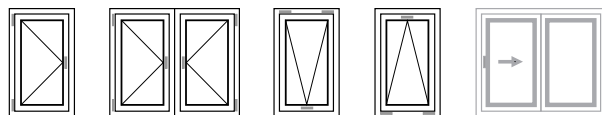
Additional technical details and product configurations can be found in the ST Lock technical manual. Available upon request.

Compatible Locking Kit

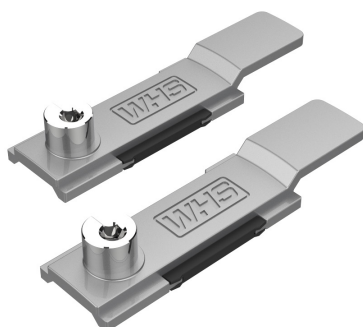
ST Series locks are compatible with standard SDK locking kits and Specter locking kits.

Drawing and Dimensions

Available upon request.



SDK007



RAL

ZN

PA

Ss

SDK terminal adjustable locking point.

Profile Requirement

Euro-Groove 15x20mm (Type 1)

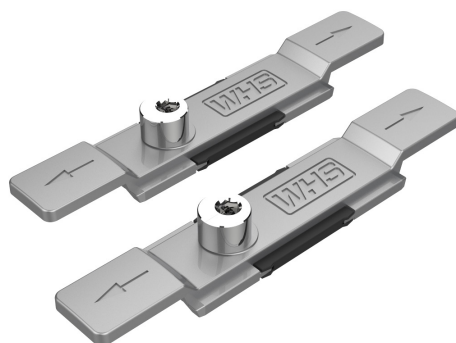
Ordering Details

PRODUCT CODE	BOX QUANTITY
SDK007	100

Drawing and Dimensions

Available upon request.

SDK002



RAL

ZN

PA

Ss

SDK continuous/joint adjustable locking point.

Profile Requirement

Euro-Groove 15x20mm (Type 1)

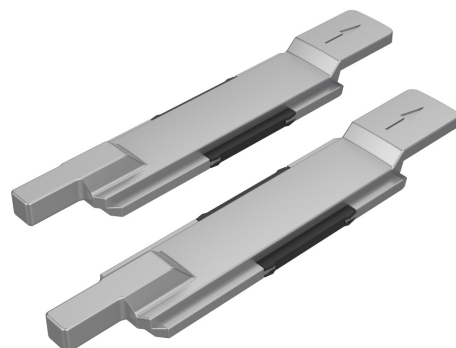
Ordering Details

PRODUCT CODE	BOX QUANTITY
SDK002	100

Drawing and Dimensions

Available upon request.

SDK003



RAL

ZN

PA

SDK terminal locking shoot bolt.

Profile Requirement

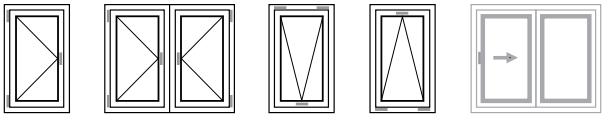
Euro-Groove 15x20mm (Type 1)

Ordering Details

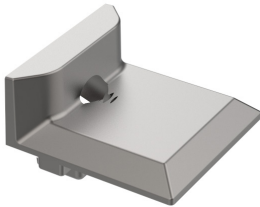
PRODUCT CODE	BOX QUANTITY
SDK003	100

Drawing and Dimensions

Available upon request.



SZ002



N/A

ZN

Ss

SZ002 groove mounted roller cam keeper.

Profile Requirement

Euro-Groove 14x18mm (Type 1)

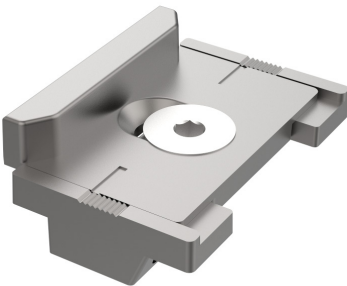
Ordering Details

PRODUCT CODE	BOX QUANTITY
SZ002	100

Drawing and Dimensions

Available upon request.

SZ016



N/A

ZN

Ss

Adjustable roller cam keeper. (+/-) 4 mm compression adjustment.

Profile Requirement

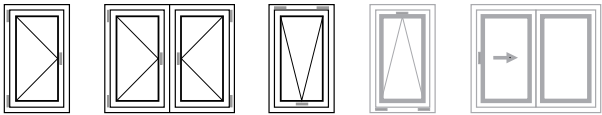
Euro-Groove 14x18mm (Type 1)

Ordering Details

PRODUCT CODE	BOX QUANTITY
SZ016	100

Drawing and Dimensions

Available upon request.



TSP106



N/A

Ss

PA

TSP106 sash ramp and shootbolt keeper.

Profile Requirement

Euro-Groove 15x20mm (Type 1)

Euro-Groove 14x18mm (Type 1)

Ordering Details

PRODUCT CODE	BOX QUANTITY
TSP106	100

Drawing and Dimensions

Available upon request.

CX003



RAL

ZN

Ss

CX flush bolt suitable applicable to passive sash with standard Euro-grooves.

Profile Requirement

Euro-Groove 14x18mm (Type 1)

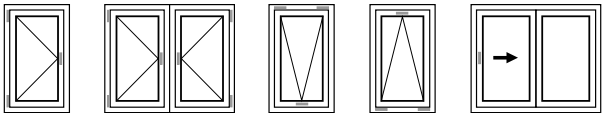
Ordering Details

PRODUCT CODE	LENGTH (MM/IN)	BOX QUANTITY
CX003	257/10.1	2

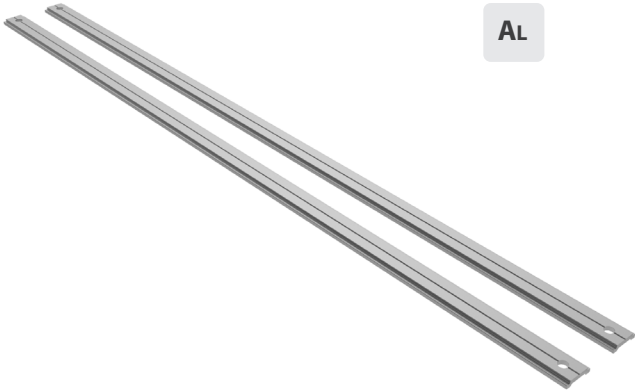
Drawing and Dimensions

Available upon request.

Swing Door Hardware
Transmission Rods
Alu Profiles



LOQ



Aluminum transmission rod compatible with SDK locking points and ST multi-point lock. Transmission rods are supplied pre-punched.

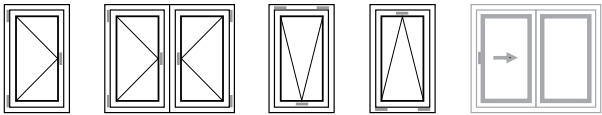
Profile Requirement
Euro-Groove 15x20mm (Type 1)

Ordering Details

PRODUCT CODE	LENGTH (IN)	BOX QUANTITY
LOQ6	6	50
LOQ12	12	50
LOQ18	18	50
LOQ24	24	50
LOQ30	30	50
LOQ36	36	50

Customization
Contact WHS Fenestration for a full list of sizes and options for customization.

Drawing and Dimensions
Available upon request.



9SB0905



N/A

PA

Specter transmission rod primary connection.

Profile Requirement

Euro-Groove 15x20mm (Type 1)

Ordering Details

PRODUCT CODE	BOX QUANTITY	LENGTH (IN)
9SB0905	100	12

Drawing and Dimensions

Available upon request.

9SB0724



N/A

PA

Specter transmission rod extension connection.

Profile Requirement

Euro-Groove 15x20mm (Type 1)

Ordering Details

PRODUCT CODE	BOX QUANTITY	LENGTH (IN)
9SB0724	100	12

Drawing and Dimensions

Available upon request.

9SB0780



RAL

ZN

Adapter for connecting Specter transmission rods to standard 6 mm and 8 mm pins.

Profile Requirement

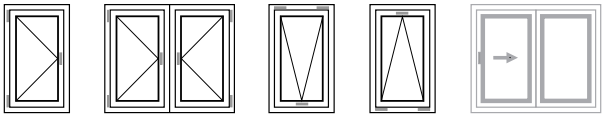
Euro-Groove 15x20mm (Type 1)

Ordering Details

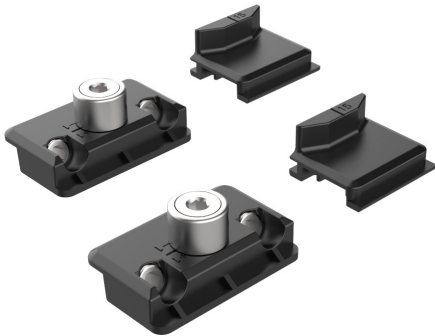
PRODUCT CODE	BOX QUANTITY
9SB0780	100

Drawing and Dimensions

Available upon request.



9SB0932



RAL

Ss

ZN

Specter standard locking point. (+/- 1 mm) locking point adjustment.

Profile Requirement

Euro-Groove 15x20mm (Type 1)

Euro-Groove 14x18mm (Type 1)

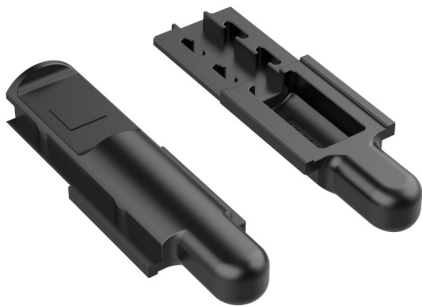
Ordering Details

PRODUCT CODE	BOX QUANTITY
9SB0932	200

Drawing and Dimensions

Available upon request.

9SB0846



RAL

ZN

Specter shoot bolt locking point.

Profile Requirement

Euro-Groove 15x20mm (Type 1)

Ordering Details

PRODUCT CODE	BOX QUANTITY
9SB0846	100

Drawing and Dimensions

Available upon request.



HY-A18



ANO	RAL
AL	ZN
Ss	PA

HY-A18 is a high capacity 3D adjustable clamp on hinge suitable for profiles with type 1 Euro-grooves.

Features and Specifications

- Split clamping plate design for rapid installation
- 3D adjustable without removing the sash
- Vertical adjustment (+/- 5mm)
- Horizontal adjustment (+/- 2mm)
- Compression adjustment (+/- .5mm)
- Supplied pre-assembled
- Available in any RAL color

Profile Requirement

Euro-Groove 15x20mm (Type 1)
Euro-Groove 14x18mm (Type 1)

Technical Manual

Additional technical details and product configurations can be found in the HY-A18 technical manual. Available upon request.

Drawing and Dimensions

Available upon request.

Ordering Details

PRODUCT CODE	HANDING LEFT/RIGHT	COLOR/FINISH	BOX QUANTITY
HY-A18-BK-L	LEFT	BLACK	12
HY-A18-BK-R	RIGHT	BLACK	12
HY-A18-SL-L	LEFT	SILVER	12
HY-A18-SL-R	RIGHT	SILVER	12
HY-A18-WH-L	LEFT	WHITE	12
HY-A18-WH-R	RIGHT	WHITE	12

SWING DOOR HARDWARE

ALU & PVC Profiles



16 MM EURO-GROOVE



Lockmaster 92 – Single Point



N/A

AL

ZN

Ss

PA

Lockmaster 92 single point lock.

Features and Specifications

- 25.4mm (1") SS304 Deadbolt Center with babysitter function as standard
- Easily reversible SS304 latch bolt to minimize stock requirements. Soft closing latch bolt to protect strikes
- 35mm, 45mm and 60mm backset options
- Sprung gearbox with PZ92mm center with elongated slot to accommodate trim set range
- 16mm and 20mm faceplate options available
- Square and round ended faceplate options available
- USA and Euro profile cylinder options available
- Brushed 304 Stainless Steel faceplate offering high corrosion resistance
- Yale branded

Profile Requirement

16 mm U-Groove

Technical Manual

Additional technical details and product configurations can be found in the Lockmaster 92 technical manual. Available upon request.

Drawing and Dimensions

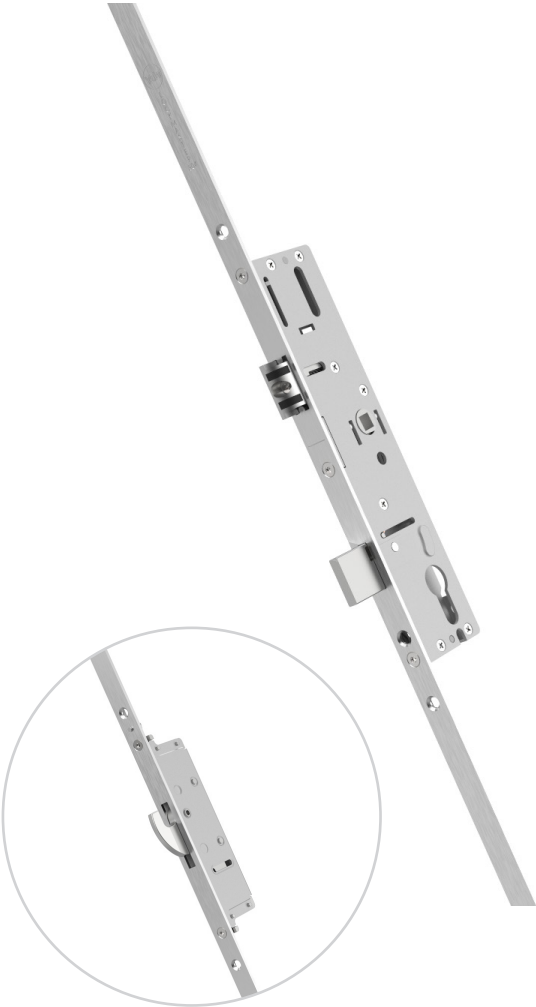
Available upon request.

Ordering Details

PRODUCT CODE	BACKSET (MM)	ACTIVE/ INACTIVE	BOX QUANTITY
YL92-319-35-104	35	ACTIVE	20
YL92-319-45-104	45	ACTIVE	20
YL92-319-60-104	60	ACTIVE	20



Lockmaster 92 – Hook Lock



N/A

Ss

ZN

PA

Lockmaster 92 multi-point hook lock.

Features and Specifications

- Lockmaster signature hook offering high security locking
- 25.4mm (1") SS304 Deadbolt Center with babysitter function as standard
- Easily reversible SS304 latch bolt to minimize stock requirements. Soft closing latch bolt to protect strikes
- 35mm, 45mm and 60mm backset options
- Sprung gearbox with PZ92mm center with elongated slot to accommodate trim set range
- 16mm and 20mm faceplate options available
- Optional Anti-Slam mishandling device; prevents multiple locking points from accidentally extending and potentially damaging door frame
- USA and Euro profile cylinder options available
- Brushed 304 Stainless Steel faceplate offering high corrosion resistance

Profile Requirement

16 mm U-Groove

Technical Manual

Additional technical details and product configurations can be found in the Lockmaster 92 technical manual. Available upon request.

Compatible Locking Kit

Lockmaster 92 is compatible with standard LM92 shootbolts and extensions.

Drawing and Dimensions

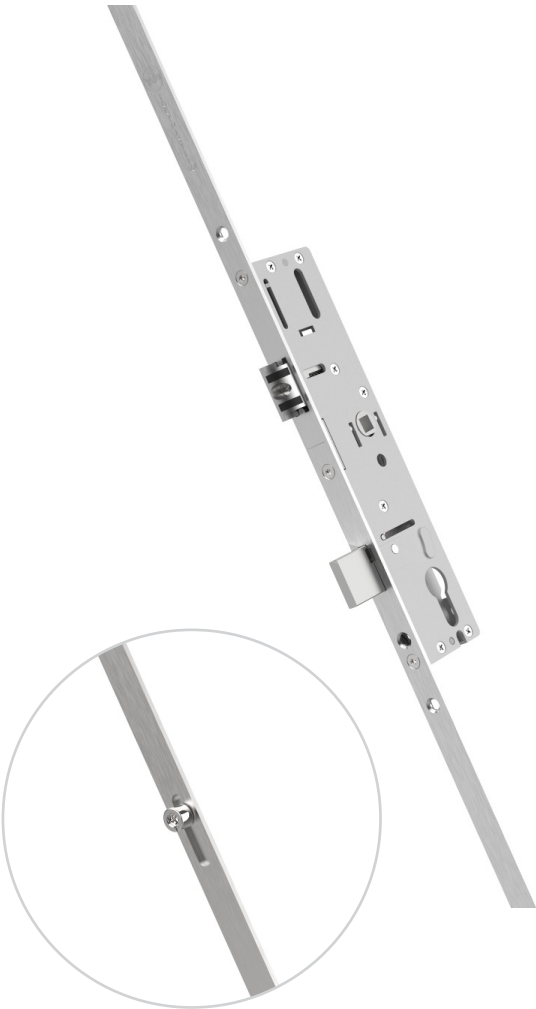
Available upon request.

Ordering Details

PRODUCT CODE	BACKSET (MM)	Lock Height (Inch)	Handle Height (Inch)	Locking Points (Hooks)	BOX QUANTITY
YL92-310-35-104	35	78.98"	35"	2	5
YL92-310-45-104	45	78.98"	35"	2	5
YL92-310-60-104	60	78.98"	35"	2	5
YL92-312-35-104	35	96"	35"	3	5
YL92-312-45-104	45	96"	35"	3	5
YL92-312-60-104	60	96"	35"	3	5



Lockmaster 92 – Roller Lock



N/A

Ss

ZN

PA

Lockmaster 92 multi-point roller cam lock.

Features and Specifications

- Lockmaster adjustable roller cam locking points
- 25.4mm (1") SS304 Deadbolt Center with babysitter function as standard
- Easily reversible SS304 latch bolt to minimize stock requirements. Soft closing latch bolt to protect strikes
- 35mm, 45mm and 60mm backset options
- Sprung gearbox with PZ92mm center with elongated slot to accommodate trim set range
- 16mm and 20mm faceplate options available
- Optional Anti-Slam mishandling device; prevents multiple locking points from accidentally extending and potentially damaging door frame
- USA and Euro profile cylinder options available
- Brushed 304 Stainless Steel faceplate offering high corrosion resistance

Profile Requirement

16 mm U-Groove

Technical Manual

Additional technical details and product configurations can be found in the Lockmaster 92 technical manual. Available upon request.

Compatible Locking Kit

Lockmaster 92 is compatible with standard LM92 shootbolts and extensions.

Drawing and Dimensions

Available upon request.

Ordering Details

PRODUCT CODE	BACKSET (MM)	Lock Height (Inch)	Handle Height (Inch)	Locking Points (Rollers)	BOX QUANTITY
YL92-330-35-104	35	78.74"	35"	4	5
YL92-335-35-104	45	78.74"	38"	4	5



Lockmaster 92 – Inactive

N/A

Ss

ZN

PA

Lockmaster 92 inactive lock.

Features and Specifications

- Lockmaster adjustable roller cam locking points
- 25.4mm (1") SS304 Deadbolt Center with babysitter function as standard
- Easily reversible SS304 latch bolt to minimize stock requirements. Soft closing latch bolt to protect strikes
- 35mm, 45mm and 60mm backset options
- Sprung gearbox with PZ92mm center with elongated slot to accommodate trim set range
- 16mm and 20mm faceplate options available
- Optional Anti-Slam mishandling device; prevents multiple locking points from accidentally extending and potentially damaging door frame
- USA and Euro profile cylinder options available
- Brushed 304 Stainless Steel faceplate offering high corrosion resistance

Profile Requirement

16 mm U-Groove

Technical Manual

Additional technical details and product configurations can be found in the Lockmaster 92 technical manual. Available upon request.

Compatible Locking Kit

Lockmaster 92 is compatible with standard LM92 shootbolts and extensions.

Drawing and Dimensions

Available upon request.

Ordering Details

PRODUCT CODE	BACKSET (MM)	Lock Height (Inch)	Handle Height (Inch)	Locking Points (Rollers)	BOX QUANTITY
YL92-330-35-104	35	78.74"	35"	4	5
YL92-335-35-104	45	78.74"	38"	4	5



Keyturn Roller Latch

N/A

Ss

ZN

PA

Lockmaster 90 degree keyturn operated multi-point lock.

Features and Specifications

- 90° Keyturn operated locking device with adjustable roller latch
- Lockmaster signature hook offering high security locking
- Deadbolt Center with babysitter function as standard
- 35mm, 45mm and 55mm backset options
- 304 Stainless Steel 24mm U-Channel and 20mm face-plate options offering high corrosion resistance
- Designed to be compatible with a wide range of decorative furniture sets, including a full range of SS316 Bar handles and cylinder escutcheons

Profile Requirement

24 mm Hardware Cavity
20 mm U-Groove

Technical Manual

Additional technical details and product configurations can be found in the Lockmaster 92 technical manual. Available upon request.

Compatible Locking Kit

Keyturn Roller Latch is compatible with 24 mm and 20 mm LM92 extensions.

Drawing and Dimensions

Available upon request.

Ordering Details

PRODUCT CODE	BACKSET (MM)	Faceplate Width (mm)	Lock Height (Inch)	Handle Height (Inch)	Locking Points (Hooks)	BOX QUANTITY
YKTR-35D-001-60	35	24	72	40.71"	3	5
YKTR-45D-001-60	45	24	72	40.71"	3	5
YKTR-55D-001-60	55	24	72	40.71"	3	5
YKTR-35D-003-60	35	20	72	40.71"	3	5
YKTR-45D-003-60	45	20	72	40.71"	3	5
YKTR-55D-003-60	55	20	72	40.71"	3	5



SPLSB-35-60



Lockmaster 92 reverser top shootbolt.

Profile Requirement
16 mm U-Groove

Ordering Details

PRODUCT CODE	BOX QUANTITY
SPLSB-35-60	50

Drawing and Dimensions
Available upon request.

SPLSB-34-60



Lockmaster 92 bottom shootbolt.

Profile Requirement
16 mm U-Groove

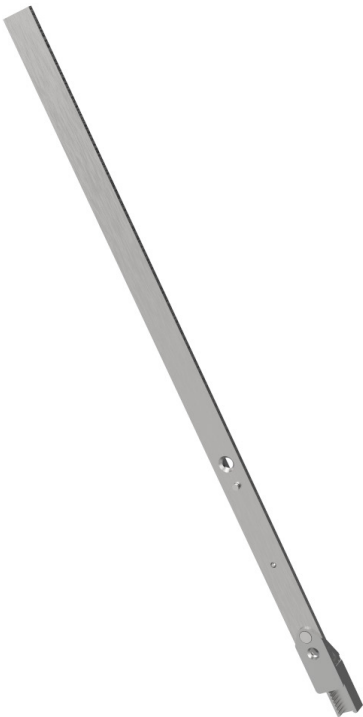
Ordering Details

PRODUCT CODE	BOX QUANTITY
SPLSB-34-60	50

Drawing and Dimensions
Available upon request.



SPL2480-104



N/A

ZN

PA

Ss

Lockmaster 92 13.6" stud extension.

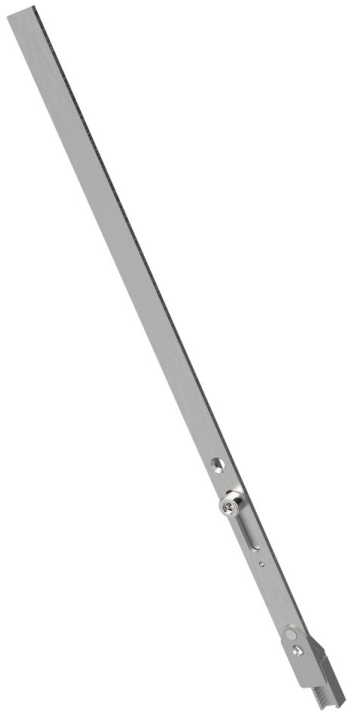
Profile Requirement
16 mm U-Groove

Ordering Details

PRODUCT CODE	EXTENSION LENGTH (INCH)	BOX QUANTITY
SPL2480-104	13.6"	25

Drawing and Dimensions
Available upon request.

SPL2480R-104



N/A

ZN

PA

Ss

Lockmaster 92 13.6" roller extension.

Profile Requirement
16 mm U-Groove

Ordering Details

PRODUCT CODE	EXTENSION LENGTH (INCH)	BOX QUANTITY
SPL2480R-104	13.6"	25

Drawing and Dimensions
Available upon request.



SPL2480HK-104



Lockmaster 92 27" hook extension.

Profile Requirement
16 mm U-Groove

Ordering Details

PRODUCT CODE	EXTENSION LENGTH (INCH)	BOX QUANTITY
SPL2480HK-104	27"	5

Drawing and Dimensions
Available upon request.



ELEVATION HINGE



RAL

Ss

ZN

PA

The Elevation Hinge is a 3D adjustable door hinge that offers a slim, aesthetically pleasing design with an unobtrusive appearance. The unique patented design offers easy, accurate and independent 3D adjustment with the door in the closed position. Supplied pre-assembled and ready to fit, dramatically speeding up the fitting process.

Features and Specifications

- 3D adjustment – Height and lateral adjustment achievable with door closed (Full Float Technology for visual alignment)
- No unsightly gaps visible following adjustment
- Double knuckle for increased load bearing
- Fitter and installer friendly (Lift On, Lift Off design)
- One product fits all standard eurogroove system
- Continuous gasket strip factory installed
- Available in a variety of colors
- Complete installation jig set available
- Patented design

Ordering Details

PRODUCT CODE	COLOR/FINISH	BOX QUANTITY
0713-2000-WH	WHITE	24
0713-2000-BK	BLACK	24
0713-2000-SS	SILVER	24
0713-2000-MILL	MILL	24
JIG-0045	N/A	1

Profile Requirement

Euro-Groove 16 MM

Technical Manual

Additional technical details and product configurations can be found in the Elevation Hinge technical manual. Available upon request.

Drawing and Dimensions

Available upon request.



PATRIOT PLUS HINGE



RAL

Ss

ZN

PA

The Patriot Plus high security door hinge offers a slim, unobtrusive appearance with an improved clearance for plaster line and finishing. Easy, accurate and independent 3D adjustment means no visible gap during height adjustment, giving better aesthetics and stability. It is supplied pre-assembled and ready to fit, dramatically speeding up the fitting process.

Features and Specifications

- Pre-assembled ready to fit
- Slim and unobtrusive appearance
- Fitter and installer friendly
- Patented anti-lift feature
- Additional location pins to reduce twist
- Full 3D adjustment
- Vertical adjustment with no gap created between flag and base
- Non handed
- Slim frame plate
- No visible fixings

Ordering Details

PRODUCT CODE	COLOR/FINISH	BOX QUANTITY
0785-2002-WH-FL	WHITE	24
0785-2002-BK-FL	BLACK	24
0785-2002-SS-FL	SILVER	24
0785-2002-MILL	MILL	24
JIG-0036	N/A	1

Profile Requirement

Euro-Groove 16 MM

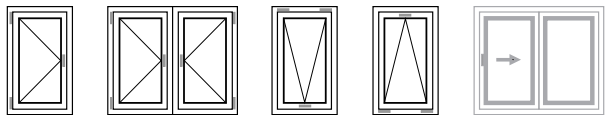
Technical Manual

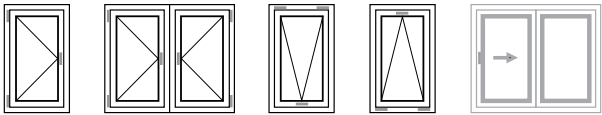
Additional technical details and product configurations can be found in the Patriot Hinge technical manual. Available upon request.

Drawing and Dimensions

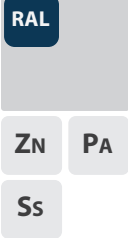
Available upon request.

PROJECTED
WINDOW
HARDWARE
ALU Profiles





BZO30



BZO30 offset fork driven handle for commercial window applications.

Features and Specifications

- Available fork lengths: 25, 27, 30, 44
- Concealed top mounted fasteners
- Supplied pre-assembled and ready to install
- 90 degree rotation
- Available in powder coated finish

Profile Requirement

N/A

Finish Options

Specify finish by adding (XX) to product code. Satin silver (SS), satin black (SB), satin white (SW). Custom finishes available.

Drawing and Dimensions

Available upon request.

Ordering Details

PRODUCT CODE	HANDING LEFT/RIGHT	BOX QUANTITY
BZO30R	RIGHT	12
BZO30L	LEFT	12

BZO37



BZO37 in-line fork driven handle for commercial window applications.

Features and Specifications

- Available fork lengths: 25, 27, 30, 44
- Concealed top mounted fasteners
- Supplied pre-assembled and ready to install
- 90 degree rotation
- Available in powder coated finish

Profile Requirement

N/A

Finish Options

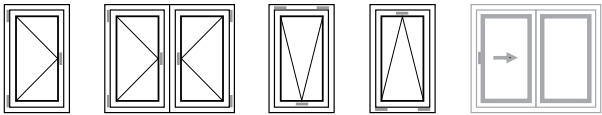
Specify finish by adding (XX) to product code. Satin silver (SS), satin black (SB), satin white (SW). Custom finishes available.

Drawing and Dimensions

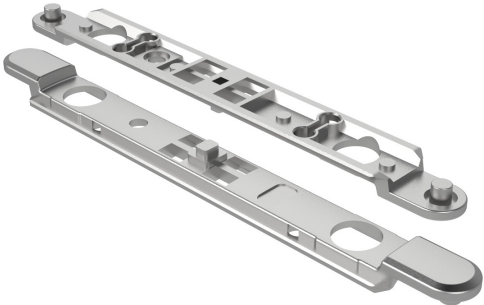
Available upon request.

Ordering Details

PRODUCT CODE	HANDING LEFT/RIGHT	BOX QUANTITY
BZO37	N/A	12



PQ005



N/A

ZNPA

Universal locking transmission component for uni-directional locking.

Profile Requirement
Euro-Groove 15x20mm (Type 1)

Ordering Details

PRODUCT CODE	BOX QUANTITY
PQ005	25

Drawing and Dimensions
Available upon request.

STERLING LOCK



N/A

SsPA

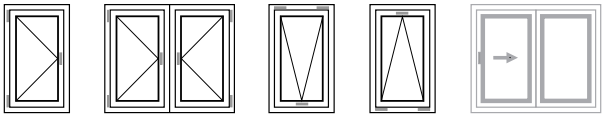
A compact austenitic stainless steel bi-directional gearbox to operate multi-point locking on structurally glazed style window systems.

Profile Requirement
Euro-Groove 15x20mm (Type 1)

Ordering Details

PRODUCT CODE	HANDING LEFT/RIGHT	BOX QUANTITY
SLT1506R	RIGHT	25
SLT1506L	LEFT	25

Drawing and Dimensions
Available upon request.



SDK007



RAL

ZN PA

Ss

SDK terminal adjustable locking point.

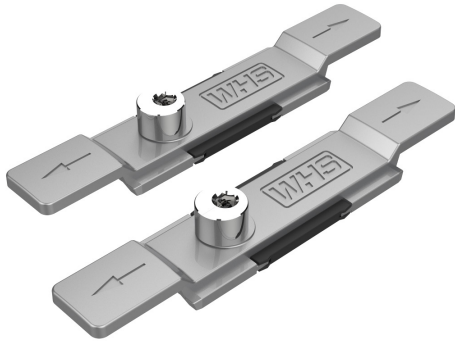
Profile Requirement
Euro-Groove 15x20mm (Type 1)

Ordering Details

PRODUCT CODE	BOX QUANTITY
SDK007	100

Drawing and Dimensions
Available upon request.

SDK002



RAL

ZN PA

Ss

SDK continuous/joint adjustable locking point.

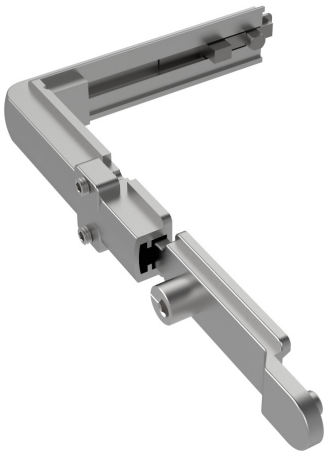
Profile Requirement
Euro-Groove 15x20mm (Type 1)

Ordering Details

PRODUCT CODE	BOX QUANTITY
SDK002	100

Drawing and Dimensions
Available upon request.

ZJQ002



PVD RAL

ANO

ZN PA

Ss

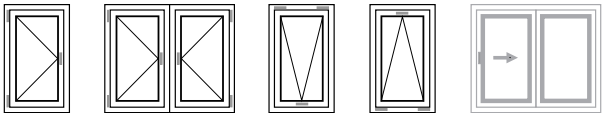
Locking corner transmission.

Profile Requirement
Euro-Groove 15x20mm (Type 1)

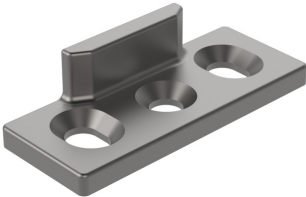
Ordering Details

PRODUCT CODE	BOX QUANTITY
ZJQ002	50

Drawing and Dimensions
Available upon request.



SZ008



N/A

Zn

SZ008 adjustable roller cam keeper

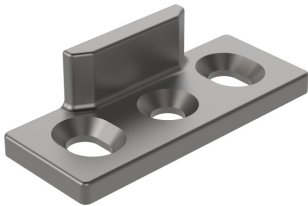
Profile Requirement
N/A

Ordering Details

PRODUCT CODE	BOX QUANTITY	KEEPER HEIGHT (MM)
SZ008	100	10

Drawing and Dimensions
Available upon request.

SZ001



N/A

Zn

SZ001 adjustable roller cam keeper.

Profile Requirement
N/A

Ordering Details

PRODUCT CODE	BOX QUANTITY	KEEPER HEIGHT (MM)
SZ001	100	11

Drawing and Dimensions
Available upon request.

SZ004



N/A

Zn

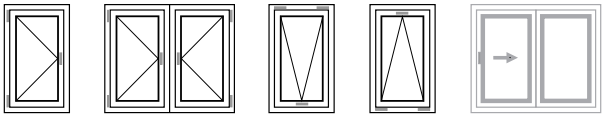
SZ004 adjustable roller cam keeper.

Profile Requirement
N/A

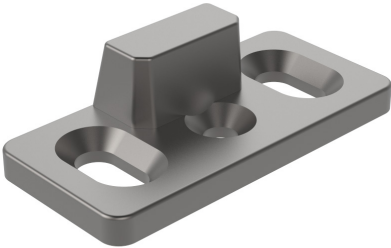
Ordering Details

PRODUCT CODE	BOX QUANTITY	KEEPER HEIGHT (MM)
SZ004	100	14

Drawing and Dimensions
Available upon request.



SZ003



N/A

Zn

SZ003 adjustable roller cam keeper.

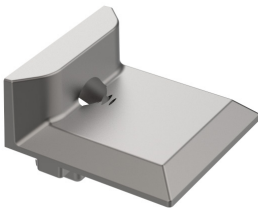
Profile Requirement
N/A

Ordering Details

PRODUCT CODE	BOX QUANTITY	KEEPER HEIGHT (MM)
SZ003	100	13.5

Drawing and Dimensions
Available upon request.

SZ002



N/A

ZnSs

SZ002 groove mounted roller cam keeper.

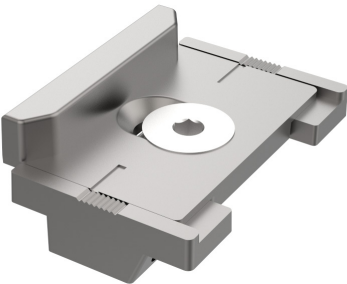
Profile Requirement
Euro-Groove 14x18 mm (Type 1)

Ordering Details

PRODUCT CODE	BOX QUANTITY
SZ002	100

Drawing and Dimensions
Available upon request.

SZ016



N/A

ZnSs

SZ016 Adjustable groove mounted roller cam keeper. (+/-) 4 mm compression adjustment.

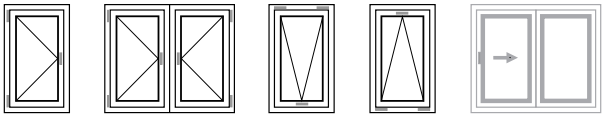
Profile Requirement
Euro-Groove 14x18 mm (Type 1)

Ordering Details

PRODUCT CODE	BOX QUANTITY
SZ016	100

Drawing and Dimensions
Available upon request.

Projected Window Hardware
Friction Hinges
ALU Profiles



STERLING HINGE



N/A

Ss

PA

A superior self-balancing hinge range with unrivalled weather sealing providing natural ventilation on projecting top and side hung windows.

Features and Specifications

- Suitable for top hung vents up to 397 lb and 98" high
- Suitable for side hung vents up to 122 lb and 33" wide
- Unrivalled weather sealing
- Superior carrying capacity
- Standard and offset variants available
- Austenitic* stainless steel for enhanced corrosion resistance
- Capable of achieving all leading international standards, including the UK BS 6375; the North American AAMA 901.1; and the Singapore Standard 212

Profile Requirement

16-18mm / .62"-.70" Hardware Cavity

Technical Manual

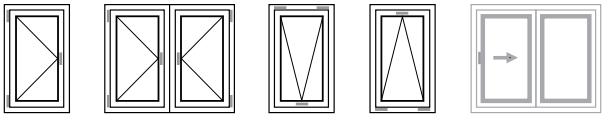
Additional technical details and product configurations can be found in the Sterling Hinge technical manual. Available upon request.

Drawing and Dimensions

Available upon request.

Ordering Details

PRODUCT CODE	TOP/SIDE HUNG	MAX WEIGHT (LB)	MAX HEIGHT (IN)	MAX WIDTH (IN)	OPENING ANGLE	BOX QUANTITY
SPS10	SIDE	83	-	26	80	25
SPSH16	SIDE	121	-	33	60	25
SPT10	TOP	88	25	-	50	25
SPT12	TOP	110	31.5	-	50	25
SPT16	TOP	143	43.3	-	50	25
SPTH16	TOP	220	43.3	-	30	25
SPT22	TOP	220	59	-	45	20
SPT22W	TOP	220	78.7	-	20	20
SPT26	TOP	397	98.4	-	20	10



STORM HINGE



N/A

Ss

PA

A self-balancing hinge range achieving high gust loading performance on projecting top and side hung windows.

Features and Specifications

- Suitable for top hung vents up to 264 lb and 87" high
- Suitable for side hung vents up to 103 lb and 33" wide
- Enhanced weather sealing
- Standard and offset variants available
- Austenitic* stainless steel for enhanced corrosion resistance
- Capable of achieving all leading international standards, including the UK BS 6375; the North American AAMA 901.1; and the Singapore Standard 212

Profile Requirement

16-18mm / .62"-.70" Hardware Cavity

Technical Manual

Additional technical details and product configurations can be found in the Storm Hinge technical manual. Available upon request.

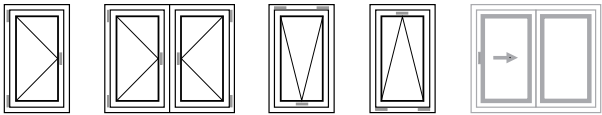
Drawing and Dimensions

Available upon request.

Ordering Details

PRODUCT CODE	TOP/SIDE HUNG	MAX WEIGHT (LB)	MAX HEIGHT (IN)	MAX WIDTH (IN)	OPENING ANGLE	BOX QUANTITY
STORMBS10	SIDE	84	-	26	80	25
STORMBS16	SIDE	103	-	33	90	25
STORM16E	SIDE	103		33	90	25
STORMB10	TOP	81	25	-	50	25
STORMB12	TOP	100	31	-	50	25
STORMB16	TOP	121	43	-	50	25
STORMB22	TOP	165	59	-	45	20
STORMB26	TOP	264	87	-	20	10

Projected Window Hardware
Friction Hinges
ALU Profiles



JX-EURO

N/A

Ss PA



JX-Euro is a high capacity self locating hinge suitable for profiles with type 1 Euro-grooves. Suitable for push out side hung windows and crank out top hung windows.

Features and Specifications

- Suitable for top hung vents up to 220 lb and 72" high
- Suitable for side hung vents up to 140 lb and 36" wide
- Asymmetric design for enhanced weather sealing
- Austenitic* stainless steel for enhanced corrosion resistance
- Capable of achieving all leading international standards, including the UK BS 6375; the North American AAMA 901.1; and the Singapore Standard 212

Profile Requirement

Euro-Groove 15x20mm (Type 1)
Euro-Groove 14x18mm (Type 1)

Technical Manual

Additional technical details and product configurations can be found in the JX-Euro technical manual. Available upon request.

Drawing and Dimensions

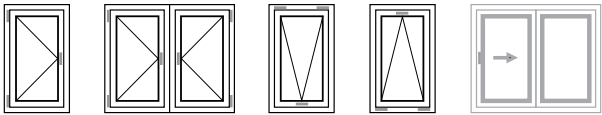
Available upon request.

Ordering Details

PRODUCT CODE	TOP/SIDE HUNG	MAX WEIGHT (LB)	MAX HEIGHT (IN)	MAX WIDTH (IN)	OPENING ANGLE	BOX QUANTITY
JXE-C-1909	SIDE	135	-	36	90	25
JXE-C-1909	TOP*	220*	72*		*	25

Top Hung Application*

Only suitable for top hung application when used in conjunction with a crank operator or secondary friction/hold open device.



SDR

N/A

Ss

PA

Key release restrictor stay for use with Sterling and Storm Balanced heavy duty hinges

Features and Specifications

- Can be used on top hung and side hung vents
- Non handed product to reduce stock inventory
- Key sold separately
- Easy to fit with no routing required
- Full Technical and Sales Support available
- Manufactured from Austenitic* stainless steel for high corrosion resistance
- Suitable for 16mm-18mm hardware cavity
- Composite stainless steel and plastic slider for strength and maximum wear resistance

Profile Requirement

16-18mm / .62"-.70" Hardware Cavity

Technical Manual

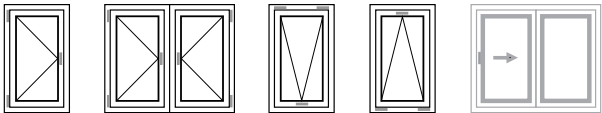
Additional technical details and product configurations can be found in the SDR technical manual. Available upon request.

Drawing and Dimensions

Available upon request.

Ordering Details

PRODUCT CODE	ARM LENGTH (IN)	BOX QUANTITY
SDR4	4	50
SDR6	6	50
SDR8	8	50
SDR10	10	50
SDR14	14	50
R7437	-	10



EGS1



N/A

PA

Molded shim component for installing hinges and accessories to sash profiles with 1 type 1 Euro-groove.

Profile Requirement

Euro-Groove 15x20mm (Type 1)

Ordering Details

PRODUCT CODE	BOX QUANTITY
EGS1	200

Drawing and Dimensions

Available upon request.

PULL IN BLOCKS



N/A

Ss

Adjustable pull-in blocks to provide intermediate compression points along the hinged side of the window in conjunction with Securistyle Sterling and Storm Balanced heavy duty hinges.

Profile Requirement

N/A

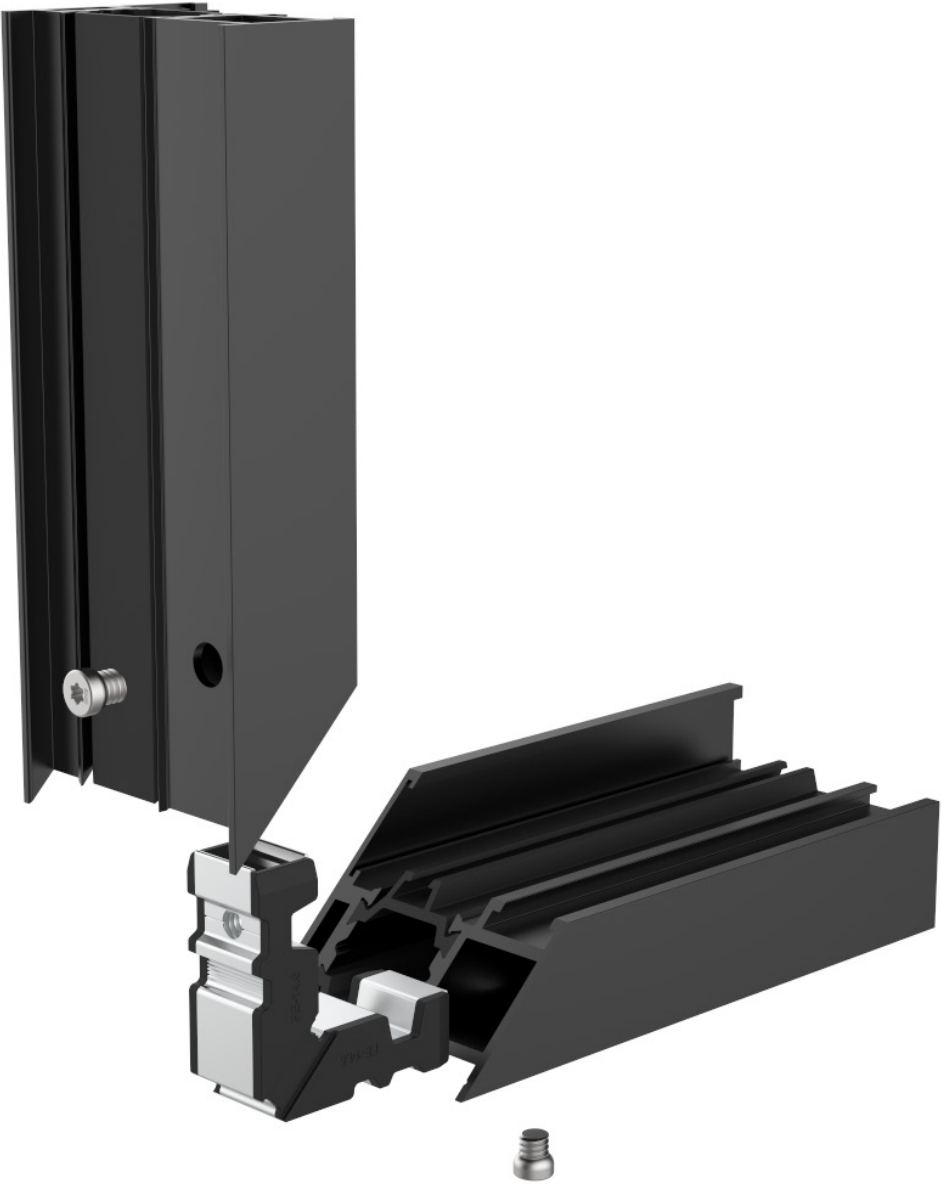
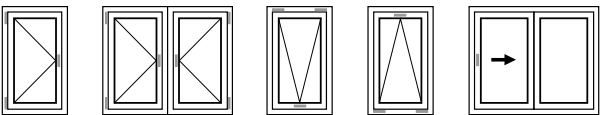
Ordering Details

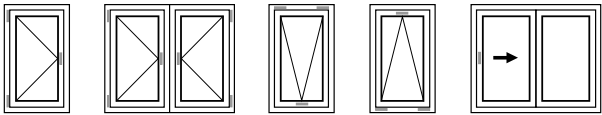
PRODUCT CODE	BOX QUANTITY
CPB1	10

Drawing and Dimensions

Available upon request.

FRAME
ASSEMBLY
JOINTS
ALU Profiles

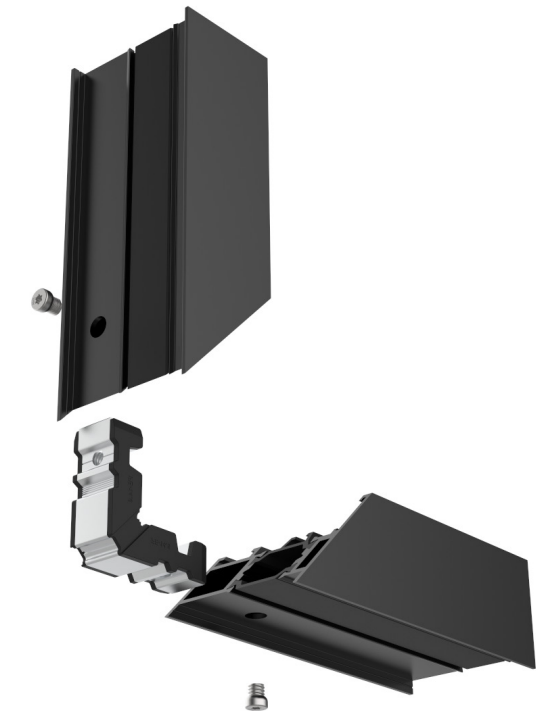




FE+



APPLICATION EXAMPLE



FE+ is a multifunction fabricated extruded corner joint for use in window and door profiles. Installation can be achieved by screwing, pinning, or crimping. Integrated channels allow for injected sealant to fully encapsulate the miter. Available in a wide range of sizes and configurations.

Features and Specifications

- Superior assembly strength achieved using FE+ mechanical fixing method
- Integrated sealant channels allow for post assembly sealant injection
- Unique fasteners sit flush when tightened to reduce conflict with hardware attachments
- No equipment required for frame assembly
- Frames can be disassembled if needed using FE+ mechanical fixing method
- Made in USA

Width Dim (X*)

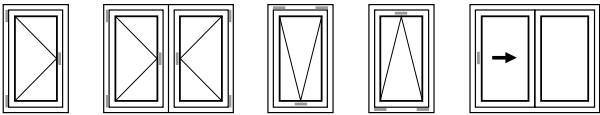
Corner joint width dimension X* is fully customizable.

Ordering Details

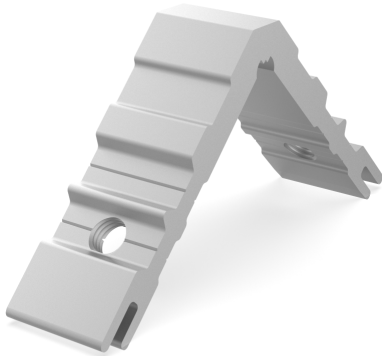
PRODUCT CODE	HEIGHT DIM (MM)	WIDTH DIM (MM)
FE-10.35	10.35	X*
FE-10.9	10.9	X*
FE-11.3	11.3	X*
FE-12.9	12.9	X*
FE-14	14	X*
FE-14.6	14.6	X*
FE-22.38	22.38	X*
FE-24.1	24.1	X*
FE-32.1	32.1	X*
FE-41.3	41.3	X*
FE-45.38	45.38	X*
FE-56.95	56.95	X*

Drawing and Dimensions

Available upon request.



FE-M



MILL

AL

FE-M is a fabricated extruded corner joint for use in window and door profiles. Installation can be achieved by screwing or crimping. Suitable for narrow profile systems. Available in a wide range of sizes and configurations.

Features and Specifications

- Superior assembly strength achieved using FE+ mechanical fixing method
- Integrated sealant channels allow for post assembly sealant injection
- Unique fasteners sit flush when tightened to reduce conflict with hardware attachments
- No equipment required for frame assembly
- Frames can be disassembled if needed using FE+ mechanical fixing method
- Made in USA

Width Dim (X*)

Corner joint width dimension X* is fully customizable.

Ordering Details

PRODUCT CODE	HEIGHT (MM)	WIDTH (MM)
FE-6.6	6.6	X*
FE-7.4	7.4	X*
FE-8.1	8.1	X*



FE-V

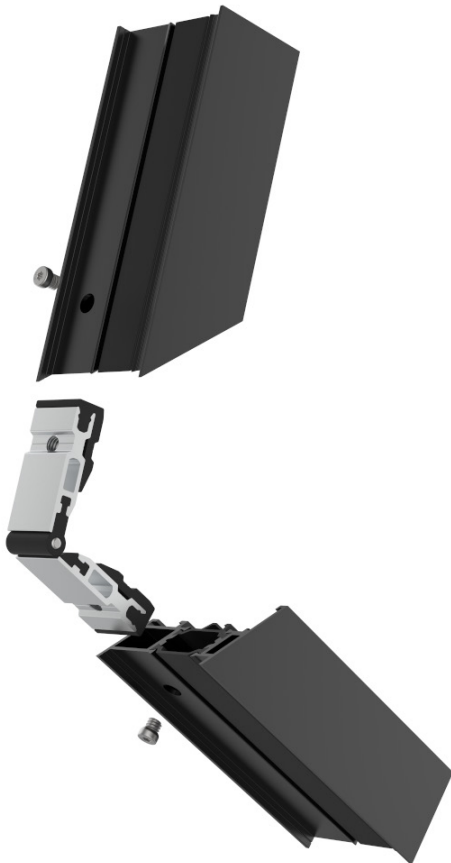
MILL

AL

PA



APPLICATION EXAMPLE



FE-V is a variable angle fabricated extruded corner joint for use in window and door profiles. Installation can be achieved with threaded screws. Supplied pre-assembled and ready to install, dramatically speeding up the frame assembly process. Available in a wide range of sizes and configurations.

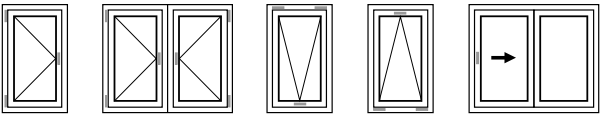
Features and Specifications

- Superior assembly strength achieved using FE+ mechanical fixing method
- Minimum angle 30° – Maximum angle 180°
- Supplied pre-assembled
- Frames can be disassembled if needed using FE+ mechanical fixing method
- Made in USA

Ordering Details

PRODUCT CODE	HEIGHT (MM)	WIDTH (MM)	BOX QUANTITY
FEV-26X10-20	10	26	20
FEV-26X14.5-20	14.5	26	20

Drawing and Dimensions
 Available upon request.

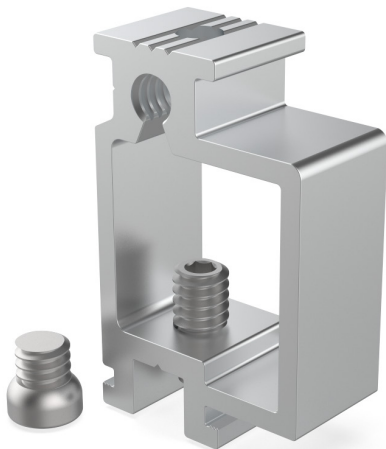


FE-T

MILL

AL

Ss



FE-T is a fabricated extruded T-joint for use in window and door profiles. Installation can be achieved by the tightening the pre-installed set screw. Designed to prevent transom rotation or deformation of the profile. Integrated sealant channels for enhanced sealing.

Features and Specifications

- Superior assembly strength achieved using FE+ mechanical fixing method
- Integrated sealant channels allow for post assembly sealant injection
- Unique fasteners sit flush when tightened to reduce conflict with hardware attachments
- No equipment required for frame assembly
- Frames can be disassembled if needed using FE+ mechanical fixing method
- Made in USA

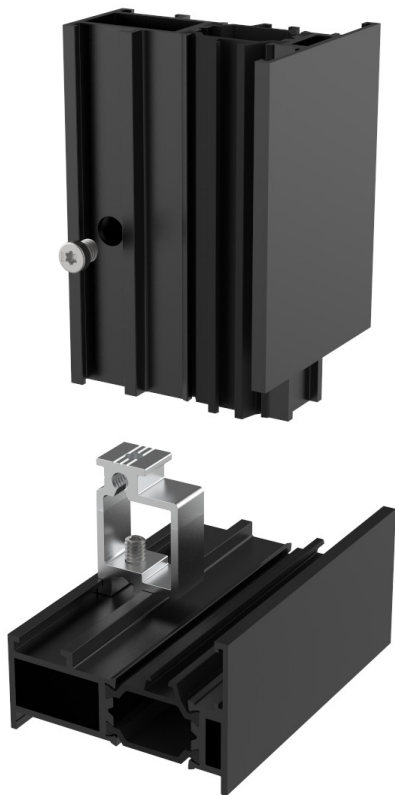
Profile Requirement

Euro-Groove 14x18 mm (Type 1)

Width Dim (X*)

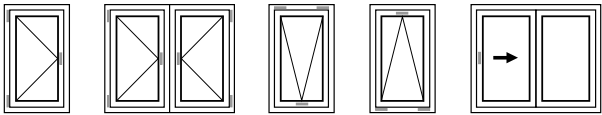
Corner joint width dimension X* is fully customizable.

APPLICATION EXAMPLE



Ordering Details

PRODUCT CODE	HEIGHT (MM)	WIDTH (MM)
FET-28.1	28.1	X*



ALIGNMENT JOINT



N/A

Ss

Stainless steel alignment corner joint.

Features and Specifications

- Unique design prevents profile deformation
- Integrated sealant channels allow for post assembly sealant injection

Ordering Details

PRODUCT CODE	HEIGHT (MM)	WIDTH (MM)	BOX QUANTITY
Z17512	17.5	1.2	500

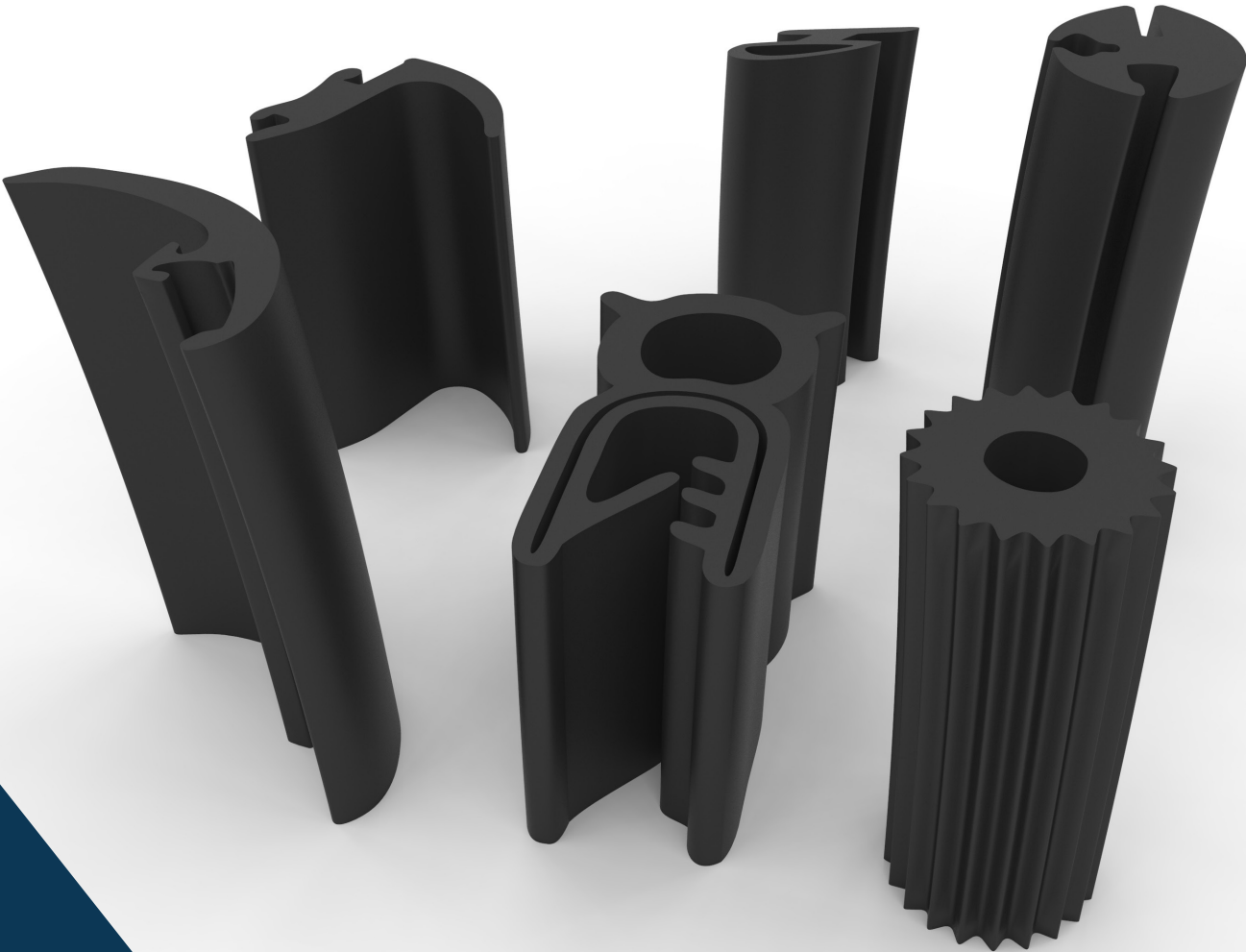
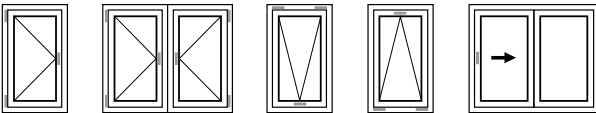
Drawing and Dimensions
Available upon request.

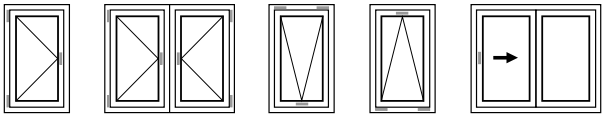
APPLICATION EXAMPLE



WEATHER SEALS & GLAZING ACCESSORIES

ALU Profiles





G0125



N/A
EPDM



Gasket Type
Bulb Gasket – Arrow Head
Drawing and Dimensions
Available upon request.

G0130

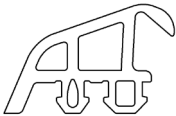


N/A
EPDM

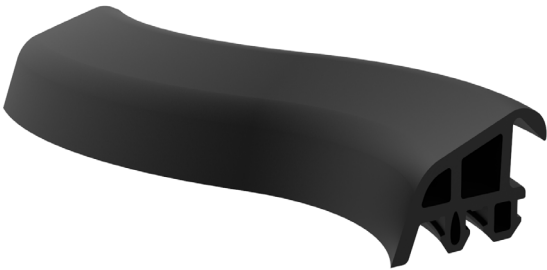


Gasket Type
Bulb Gasket – Arrow Head
Drawing and Dimensions
Available upon request.

G0129



N/A
EPDM

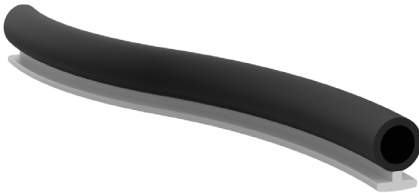


Gasket Type
Central Gasket – Arrow Head
Drawing and Dimensions
Available upon request.

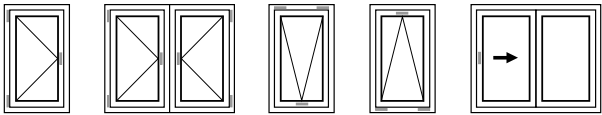
HT0009A



N/A
TPV



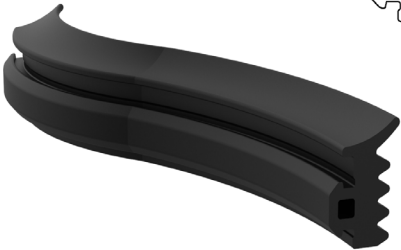
Gasket Type
Bulb Gasket – T-Slot
Drawing and Dimensions
Available upon request.



G0126



N/A
EPDM



Gasket Type
Bulb Gasket – Arrow Head
Drawing and Dimensions
Available upon request.

G0131



N/A
EPDM



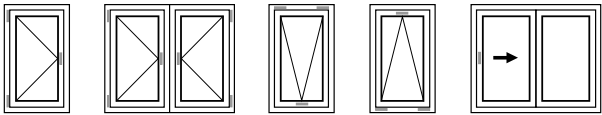
Gasket Type
Glazing Gasket – Push Gasket
Drawing and Dimensions
Available upon request.

Custom Solutions

Many applications require custom profiles or solutions to meet specific requirements. WHS frequently works with system designers to deliver custom solutions that meet unique specifications for material, hardness, size, and shape.

Molded Seals

Higher levels of performance can be achieved with the use of molded gasket corners, vulcanized sealed frames, and secondary molded components. Components like these can reduce the chance of weather infiltration and increase production speed.



W183



N/A

Pa

Inserted in the glazing groove of the profile, these clips enable the frontal coupling of the glazing stop and the use of sloped glazing beads.

Profile Requirement
Euro-Groove 14x18 mm (Type 1)

Ordering Details

PRODUCT CODE	BOX QUANTITY
W183	1000

Drawing and Dimensions
Available upon request.



WHS FENESTRATION INC.

5210 Alpha Avenue, Reno, Nevada 89506 USA

775-993-9410

sales@whs.us.com

www.whsfen.com